



REHAB RX2

TILT-IN-SPACE WHEELCHAIR

The Rehab RX2 Tilt-in-Space Wheelchair is designed to support individuals with complex seating, positioning, or pressure care needs. Its highly adjustable features and compatibility with pressure care cushions enable clinicians to tailor the chair to each user's unique requirements, facilitating effective posture management, enhanced comfort, and more efficient daily care routines.



**CONTOURED
BACKREST**

LIGHTWEIGHT
**ALUMINIUM
FRAME**
FROM 27.7KG

CRASH TEST
APPROVED
AS/NZS 3696.19

1 YEAR WARRANTY
Components

2 YEAR WARRANTY
Frame





Tilt-in-space up to 35°: Allows postural variation throughout the day, facilitating pressure redistribution and enhancing comfort during prolonged sitting periods

Lightweight aluminium frame (from 27.7 kg):

Minimises carer effort during pushing or manual handling, while supporting safer daily mobility and transport requirements

Customisable seating dimensions: Adjustable seat width, depth, backrest height, armrest position, and headrest placement allow for tailored postural support to meet individual user needs

Contoured cushions with multi-stretch covers: Provide stable support and help reduce pressure build-up, promoting skin protection and overall user comfort

Elevating and swing-away legrests: Assist with leg positioning to improve blood circulation, support foot and ankle posture, and enable easier side or front transfers

Removable rear wheels and height-adjustable castors: Enhance manoeuvrability, simplify storage in tight spaces, and support vehicle loading

Brake options for user and carer: Dual systems, including push-to-lock and drum brakes, provide users with independence and carers with added safety control

Transport ready: Crash-tested to AS/NZS 3691.19 standards for use in vehicle transport with appropriate restraint systems

Anti-tippers included as standard: Increase rear stability when tilting or navigating slopes and ramps



View our
Aspire Wheelchair Accessories Range

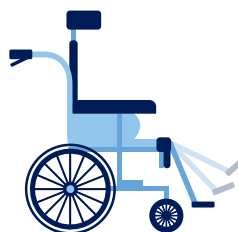
ADJUSTMENTS



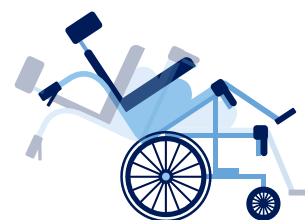
Backrest Height



Seat & Backrest Depth



Elevating Legrest



Tilt-in-space
35° Tilt | 30° Recline

REHAB RX2 WHEELCHAIR	Seat Width mm / in	Seat Depth mm / in	Seat Height mm / in	Overall Width mm / in	Backrest Height mm / in	Armrest Height mm / in	Chair Weight kg / lbs	SWL kg / st
MWS449760	410 - 460 / 16 - 18	450 - 580 / 18 - 23	430 - 505 / 17 - 20	570 - 640 / 22.5 - 25	410 - 730 / 16 - 29	170 - 300 / 6.7 - 12	27.7 / 61	150 / 24
MWS449770	460 - 510 / 18 - 20	450 - 580 / 18 - 23	430 - 505 / 17 - 20	620 - 690 / 24 - 27	410 - 730 / 16 - 29	170 - 300 / 6.7 - 12	30 / 66	150 / 24
MWS449780	510 - 560 20 - 22	450 - 580 / 18 - 23	430 - 505 / 17 - 20	670 - 740 / 26 - 29	410 - 730 / 16 - 29	170 - 300 / 6.7 - 12	32.3 / 70	150 / 24

Note: Range of motion dimensions are accurate to a +/-10mm tolerance

ASFY1417 220525